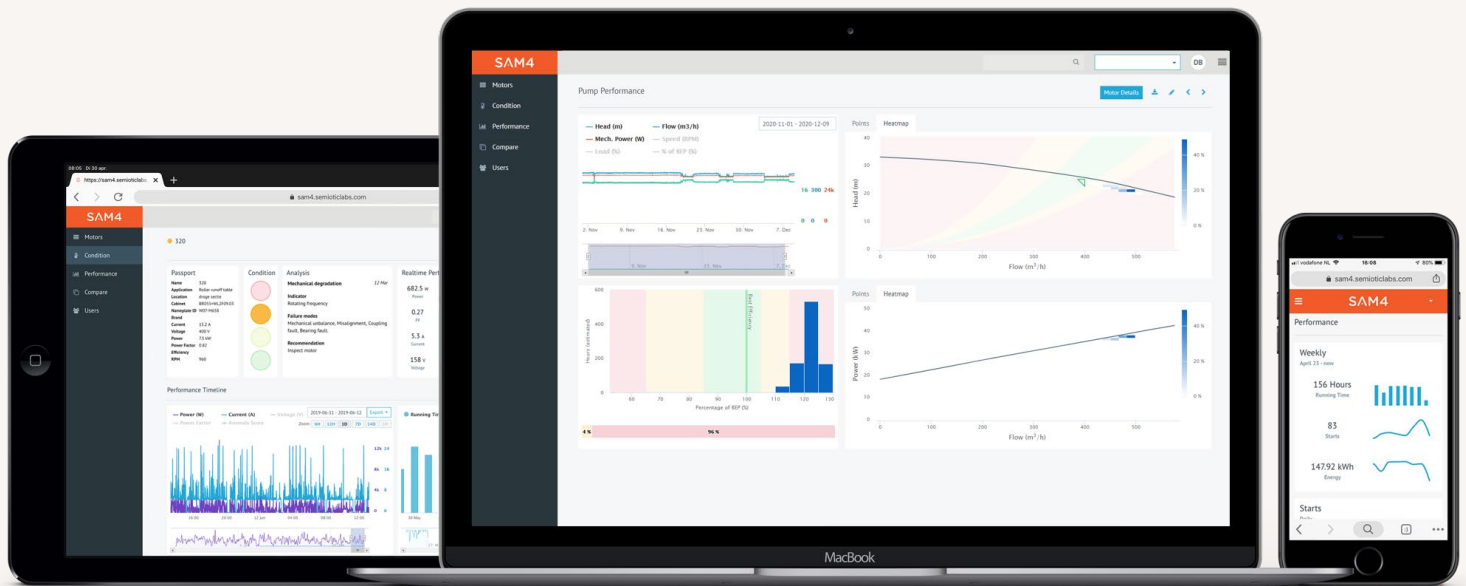


PRODUCT BROCHURE

Meet SAM4.

SAM4 is an end-to-end asset health monitoring system that helps you reduce risk, lower costs, save energy and eliminate unplanned downtime.





OUR MISSION

Eliminate
unplanned
downtime.

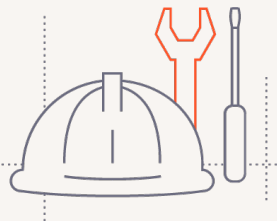
Improve your OEE.

Overall equipment effectiveness improves when maintenance takes place at exactly the right time. Innovation in smart asset monitoring makes this possible and enables you to:



ELIMINATE UNPLANNED DOWNTIME

Unplanned downtime costs hundreds of billions each year. SAM4 detects upcoming failures at an early stage, so you can schedule maintenance before breakdowns occur.



PRIORITIZE MAINTENANCE TASKS

20–40% of maintenance technicians will retire within the next 5 years. SAM4 enables you to optimize maintenance efficiency and maximize productivity.



REDUCE ENERGY WASTE

Motors typically represent ~69% of electricity costs. SAM4 provides insights that enable you to lower your electricity bill and reduce energy waste, without compromising output performance.

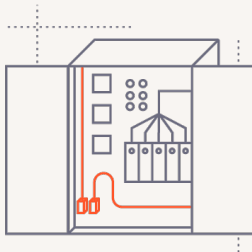
Meet SAM4.

SAM4 is an AI-driven asset health monitoring system for AC industrial motors and rotating equipment. SAM4 measures current and voltage from inside the motor control cabinet, creating a reliable, accurate, and easy-to-use condition monitoring solution that scales.



24/7 CONDITION MONITORING

SAM4 captures high-quality data round the clock to prevent failure, raise efficiency and optimize performance.



PLUG AND PLAY SYSTEM

SAM4's sensors and communication hardware install in under 30 minutes in the motor control cabinet.



AUTOMATED ANALYSIS & ALERTS

SAM4 provides real-time performance information and smart alerts with a detailed analysis and recommended actions.

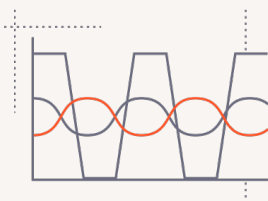
Why use SAM4?

As part of a comprehensive asset health strategy, SAM4 can expand the range of machines you can monitor, the range of faults you can detect, and the range of operational insights you have, while delivering 3-digit annual ROI.



MONITOR MACHINES IN HARSH CONDITIONS & HARD-TO-REACH PLACES

Because they measure electrical signals, SAM4's sensors install inside the motor control cabinet, not on the asset, so you can reliably monitor equipment from ATEX zones to underwater.



DETECT 90% OF FAULTS UP TO 5 MONTHS BEFORE FAILURE

Thanks to its AI-driven analysis of current and voltage, SAM4 is uniquely suited to detecting both mechanical and electrical faults in AC motors and rotating equipment.

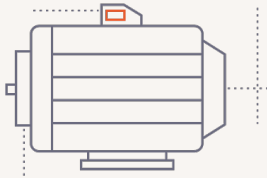


IMPROVE ASSET OPERATION WITH REAL-TIME PERFORMANCE DATA

Thanks to its high-quality current and voltage data, SAM4 is able to provide real-time energy and performance information you can use to steer operations and raise efficiency.

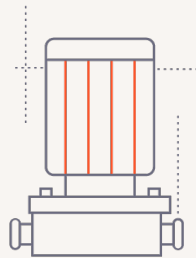
Applications.

SAM4 adds value to low and medium voltage, direct online or VFD-driven AC industrial motors and most types of rotating equipment. Please contact us for the full list.



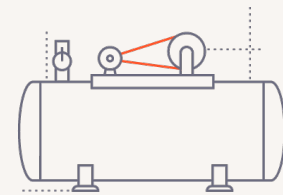
AC MOTORS

- Bearing degradation
- Misalignment
- Soft foot
- Mechanical unbalance
- Rotor eccentricity
- Broken rotor bars
- Stator shorts



PUMPS

- Cavitation
- Dry running
- Low flow
- Clogging
- Impeller damage



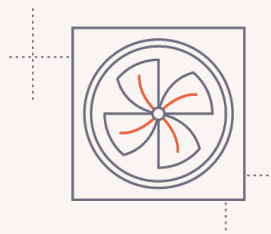
COMPRESSORS

- Dirty coils
- Blocked action line
- Bearing degradation



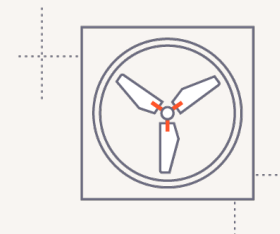
CONVEYORS

- Coupling issues
- Misalignment
- Fouling
- Bearing degradation
- Pulley/wheel unbalance
- Belt/chain wear



FANS

- Impeller damage
- Misalignment
- Mechanical unbalance
- Bearing degradation

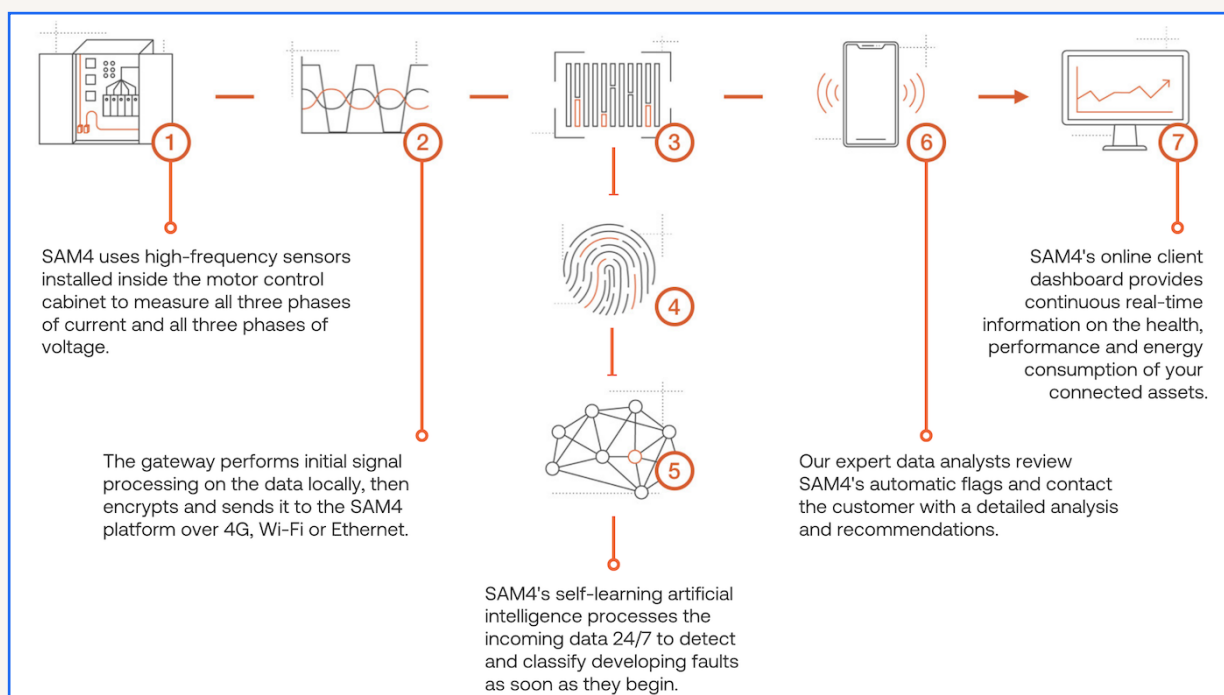


MIXERS

- Impeller damage
- Misalignment
- Mechanical unbalance
- Bearing degradation

Act at scale with a personal touch.

Whether you've got 50 assets or 50,000, SAM4's AI-powered analysis automates the heavy lifting—plus our team of data scientists, consultants and engineers is always there when you need additional support.



DEPLOY ANYWHERE

Worldwide support

Thanks to our strong global partner network, you can use SAM4 across the world.

Interested?

We'd love to tell you more, and answer any questions you may have about SAM4's value for your specific situation. If you would like to see SAM4 in action, we're happy to schedule a no-obligation demo at your convenience. We look forward to hearing from you!

CONTACT

Michael Bradley
Business Development Manager
Michael.bradley@flexachem.com

086 047 6178

www.flexachem.com

