

Application versatility with a broad range of liquids, temperatures, applications and pressures

For high temperature and pressure process applications **up to 50 barg and 400 °C**

Unique corner design & comb technology for robust and reliable operation

Welded Plate Heat Exchanger

K°BLOC | RELIABILITY REFINED



DESIGN PARAMETER



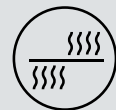
DESIGN PRESSURE

-1 BAR 50 BAR



DESIGN TEMPERATURE

-50 °C 400 °C



HEAT TRANSFER AREA

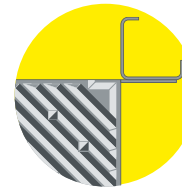
Maximum 860 m²



DESIGN CODES

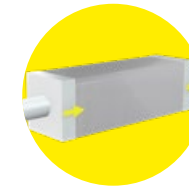
- ▶ ASME section VIII, Div 1
- ▶ PED EN13445
- ▶ PED AD2000

K°BLOC USP'S



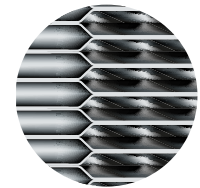
CORNER DESIGN

- ▶ Strong connection between plate pack and pressure vessel
- ▶ Robust Corner design for longer lifetime and reliable operation up to 50barg



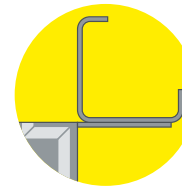
PRE-COMPRESSION

- ▶ To avoid elastic reaction and breathing of heat transfer plate pre-compression of plate pack is required



COMB DESIGN

- ▶ 3 mm comb design provides a boost on robustness of the most crucial edge area of welded Heat Exchangers
- ▶ Comb is continuously welded to column liner



COLUMN LINER

- ▶ Our one-piece column liner combined with unique K°Bloc comb design offers the highest reliability for most challenging conditions



RACK DESIGN

- ▶ High Pressure Rack design specially designed to handle high pressure requirements & challenging applications



CLEANING

- ▶ Fast & Easy Cleaning of plate pack
- ▶ Global service network

YOUR BENEFITS

Our K°Bloc is the result of decades of experience with demanding applications, more than 30 years of plate pack welding expertise and a commitment to continuous product improvement:

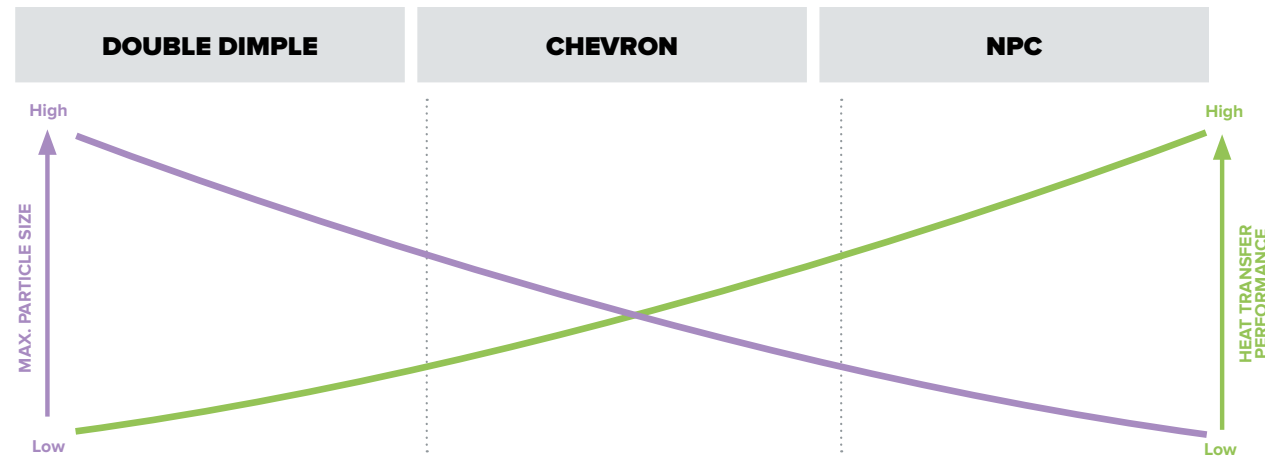
- ▶ Outstanding thermal efficiency
- ▶ Maximising your process heat integration for a reduced CAPEX
- ▶ Debottlenecking your plant when looking for capacity increase
- ▶ High corrosion resistance and lower maintenance

Welded Plate Heat Exchanger

K°BLOC | RELIABILITY REFINED

K°BLOC CORRUGATIONS

- ▶ **Chevron corrugation** enables effective heat transfer
- ▶ **Double dimple corrugation** is the first choice for highly viscous or solid containing media & for vacuum applications
- ▶ **New Performance Chevron (NPC)** has been developed to provide high thermal performance with a cost-effective solution



Property	DOUBLE DIMPLE	CHEVRON	NPC
Heat Transfer Performance	●●○○○	●●●●○	●●●●●
Pressure Drop	●○○○○	●●●●○	●●●●●
Cleanability	●●●●●	●●●●○	●●●○○
Max. Particle Size	●●●●○	●●○○○	●○○○○

PLATE MATERIALS

Our K°Bloc is available in various materials for a wide range of different applications

TYPE	AISI	TRADE NAME
1.4306	304L	
1.4404	316L	
1.4547	S31254	SMO 254
2.4068	N02201	Nickel 201
2.4602	N06022	Alloy C22
2.4675	N06200	Alloy C2000
2.4819	N10276	Alloy C276
3.7025	B265 Gr1	Titanium Gr.1

Other materials are available upon request



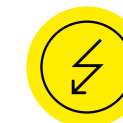
Chemicals



Food & Beverage



Heavy & Light Industry



Power



Offshore



Onshore