

**CPXV
ISO & API
Vertical Sump
Pump**

Vertical Sump Pump

Flowserve's CPXV is a vertical sump pump incorporating state-of-the-art hydraulic design for efficient and reliable service.

The CPXV can be customized to meet a wide range of needs. Compliant with ISO 5199, the CPXV is available in 40 hydraulic wet-ends and a wide variety of materials of construction. It is also available with multiple mechanical seal options and sump depths.

The CPXV is also available in an API 610 compliant version.

Operating Parameters

- Flows to 1400 m³/h (6160 US gpm)
- Heads to 250 m (820 ft)
- Temperatures from -40°C (-40°F) to 350°C (660°F)
- Pressures to 25 bar (365 psi)
- Speeds to 4700 rpm

Modular Construction ensures installation flexibility with a standard column length of 0.5 m (1.6 ft), which equates to a minimum sump depth of 0.7 m (2.3 ft)

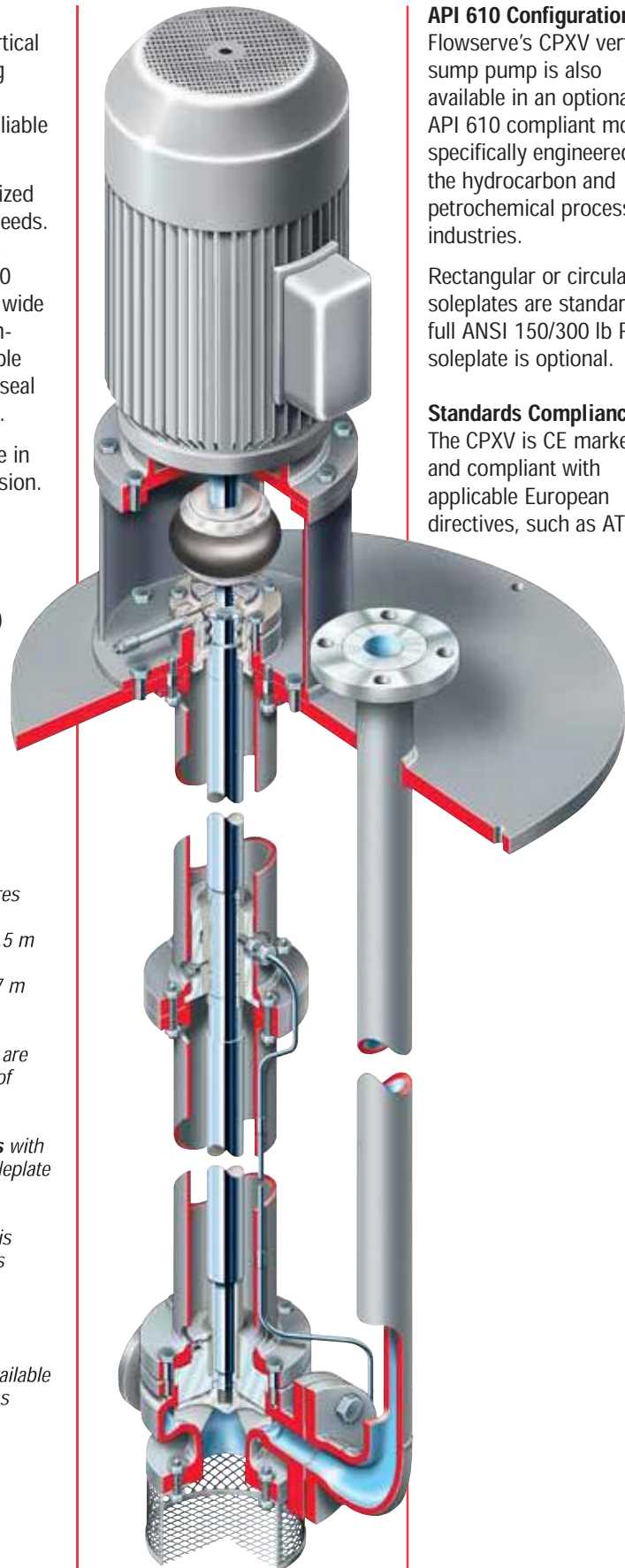
Additional Column Lengths are provided up to a maximum of 10 m (32 ft)

Heavy-Duty Thrust Bearings with axial adjustment made at soleplate level

Recessed Impeller version is available for enhanced solids handling capability

Suction Strainer optional

Fully Jacketed version is available for molten sulfur applications



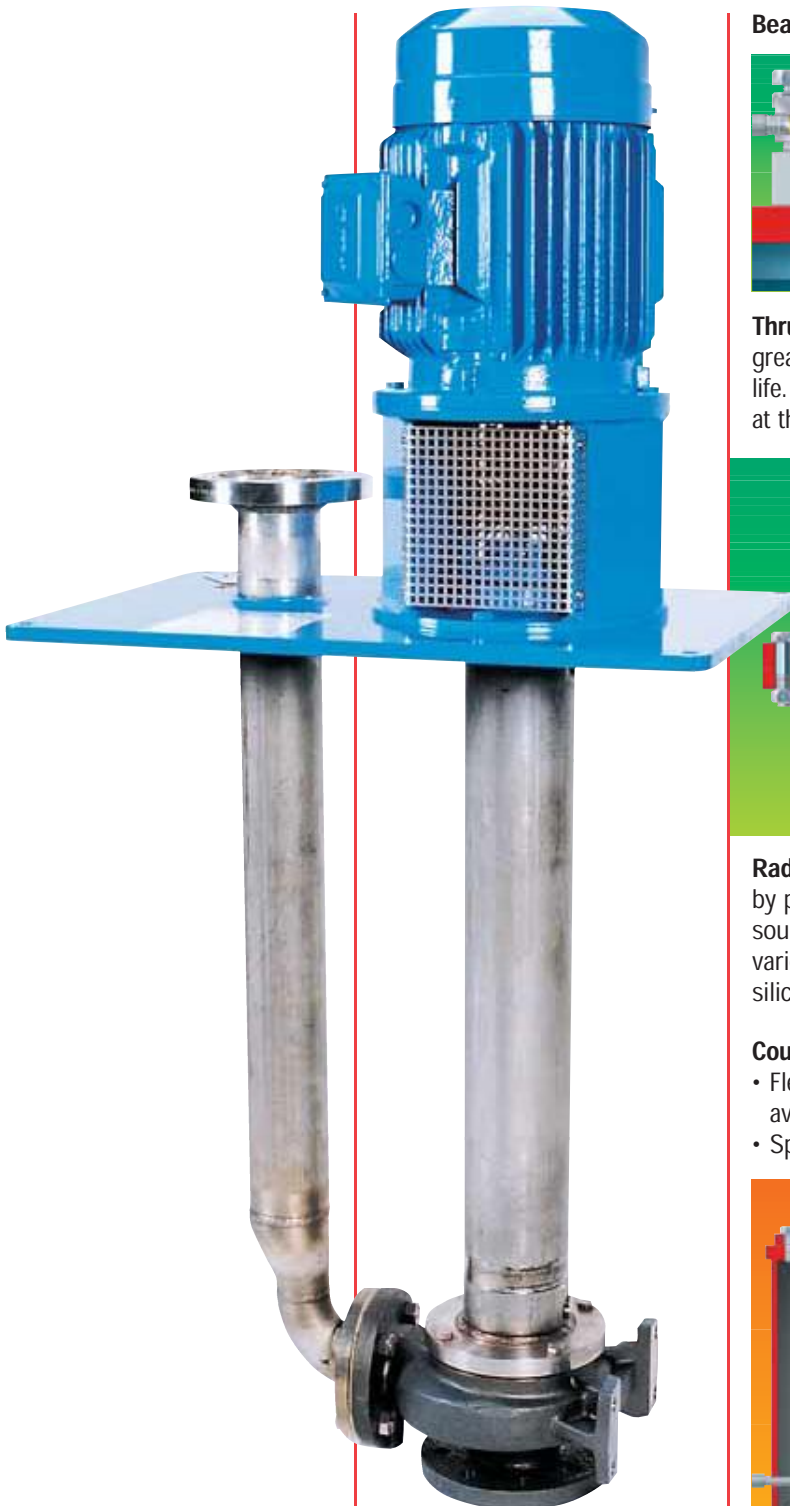
API 610 Configuration

Flowserve's CPXV vertical sump pump is also available in an optional API 610 compliant model, specifically engineered for the hydrocarbon and petrochemical processing industries.

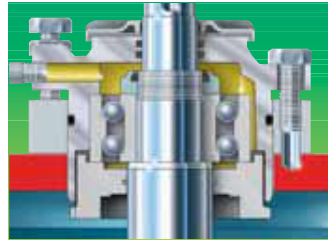
Rectangular or circular soleplates are standard. A full ANSI 150/300 lb RF soleplate is optional.

Standards Compliance

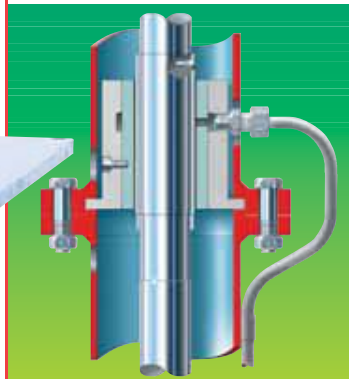
The CPXV is CE marked and compliant with applicable European directives, such as ATEX.



Bearing Options



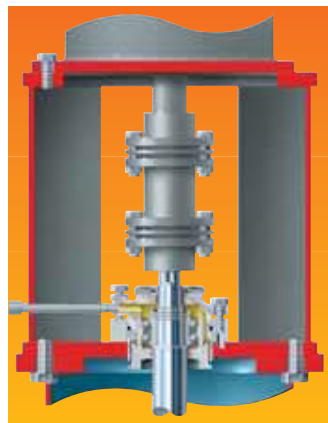
Thrust Bearings are heavy-duty grease lubricated or sealed-for-life. Either allows axial adjustment at the soleplate.



Radial Bearings can be flushed by product or from an external source and are available in a variety of materials, including silicon carbide.

Couplings

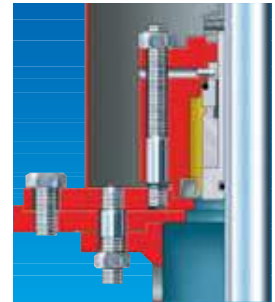
- Flexible disc coupling available
- Spacer coupling available



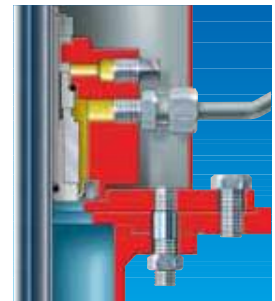
Optional Spacer Coupling

Mechanical Seal Options

A variety of mechanical seal options are available, from simple vapour sealing to tandem cartridge.



Unbalanced Mechanical Seal



Balanced Mechanical Seal

Additional Options

- Recessed impeller
- Vapour/mechanical seal option
- Fully jacketed version
- Various motor enclosures
- Rectangular or circular soleplates
- Full ASME (ANSI) Class 150/300 RF soleplate
- Non-spacer coupling