



Mach 1 Plug Valves—The Next Level

Flowserve is pleased to announce the expansion of the Mach 1 Series of plug valves that now offers two principal options.



The new Mach 1 offers the more readily available and more economical option. The Mach 1 is available up to 3" size in Class 150 and 300 for temperatures up to 400°F.

The Mach 1 HT is the valve of choice for applications up to 525°F and for pressures up to 1000 psig. It is available in Class 150, 300 and 600 (de-rated).

The Mach 1 valve has proven itself in the industrial marketplace because of its unique features:

- Consistent, lower torques allow reduced actuation costs.
- Easily repairable with no special tools required.
- In-line repairable in cases of emergency.
- OSHA lockout is standard.
- Top cap tabs prevent stress on fasteners.
- ISO mounting simplifies stocking of brackets.
- Available with UHMPE solid sleeve for radioactive services and abrasive slurry services.

For more information on how Flowserve can help you, visit our website at www.flowserve.com, telephone 931 432 4021, or fax 931 432 3155.

For complete information about the original Mach 1 HT, go to www.flowserve.com, click on "literature" in the left column, enter DVENTB0031 (zeros) in the "Keyword or Literature Number" box in the second column and click "Search."

FCD DVENTB0031-00

Specifications

Pressure ratings

ASME Class 150, 300 and 600 (de-rated)

End connections

Socket weld and threaded end sizes 1/4" to 2"

Flanged ends sizes 1" to 8"

Butt Weld sizes 1/2" to 8"

High-temperature limit 525°F/274°C

ISO mounting pad is standard

OSHA lockout is standard

Available seats:

Full sleeve for temperatures to 400°F (Mach 1)

Full sleeve with alloy insert for temperatures to 525°F (Mach 1 HT)

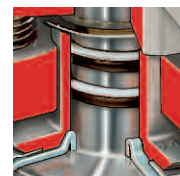
UHMPE solid sleeve to 200°F

Port Seals for lower torques in clean, clear service

Variations available in both standard and fire-sealed models are as follows:



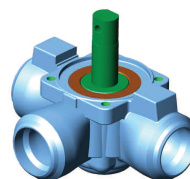
Cartridge Style



Marathon Option



Special Stem Extensions



3-Way Side Entry



Rotary Control V-port