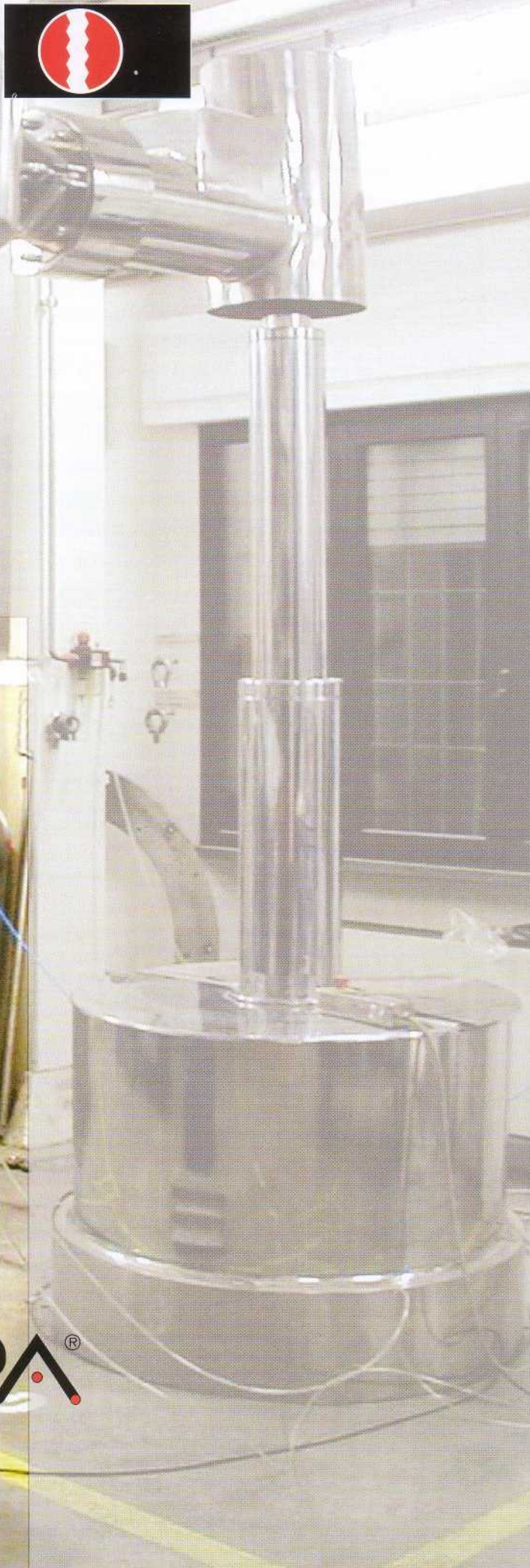


DOSING SYSTEM
IN DRUMS IN A
CLOSED CYCLE



COIRA®

DOSING SYSTEM TO DISPENSE PRODUCT INSIDE BAGS CONTAINED IN DRUMS IN A CLOSED CYCLE

Purpose: such system allows discharging of product in polyethylene bags in a closed cycle with the maximum precision.

A butterfly valve with central rotor **CO.RA.® DOUBLE V** is placed by means of a Clamp under the machine to be discharged outlet.

Such valve is designed to discharge 95% of the weight automatically opening the butterfly by means of pneumatic actuator. Once a certain weight is reached, the weighing device installed under the container, and interfaced with the valve, stops the butterfly and allows rotors dosing the product very precisely to reach the exact amount required.

Under the **CO.RA.® DOUBLE V** is installed, by Clamp, an AISI 316L stainless steel cylinder holding a continuous polyethylene cylindrical liner up to 50 Mt.

By means of polypropylene clips the operator can perform the following:

- Close liner's lower part and fill bag with product up to the correct weight (No. 1 bag's bottom).
- Close liner's upper part (No. 1 bag's top).
- Close liner's lower part (No. 2 bag's bottom).
- Cut liner between No. 1 bag's top and No. 2 bag's bottom closing clips.

Industrial electronic weighing device, features:

- Digital monitor with hard contrast liquids crystals for weight reading, with back enlightening and analogue indication of weighing field, with icons signalling active application.
- Bi-directional interface RS232C-S/V24-V28 for continuous stripe or label printer connection.
- Very quick weighing operation with updating of weight data 10 times per second.
- Explosion-proof execution.
- Roller execution with neutral rolls for weighing platform.
- Suitable to store a boundless amount of receipts.

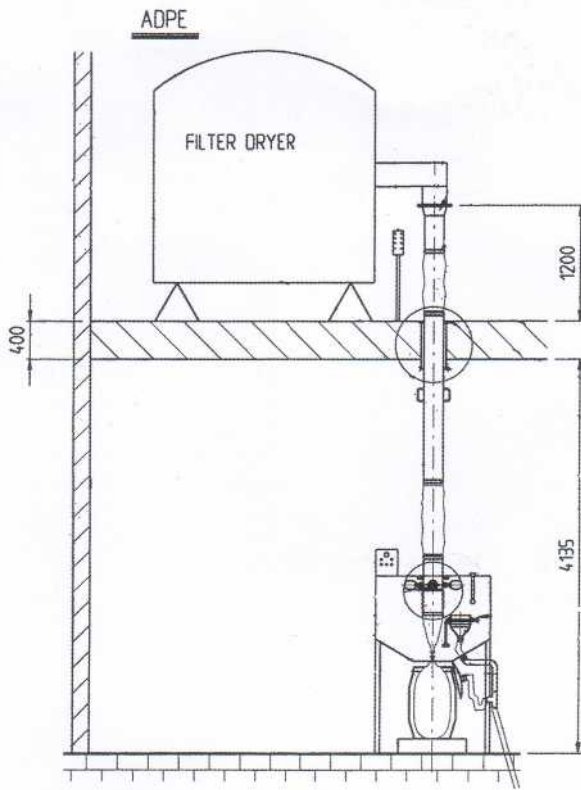
The keyboard, with functional buttons (suitable to be cut out too) allows following applications:

- Work counter with internal resolution from 10 to 100 times superior to the visualised value.
- Only one button for pieces sampling or regulation of average unit weight.
- Automatic optimisation of average weight.
- Addition storage to add up following transactions in weight or in pieces amount.
- Classification of weights or pieces amounts within two limit values, inferior and superior to the nominal one.
- Classification or dosage relays outputs.

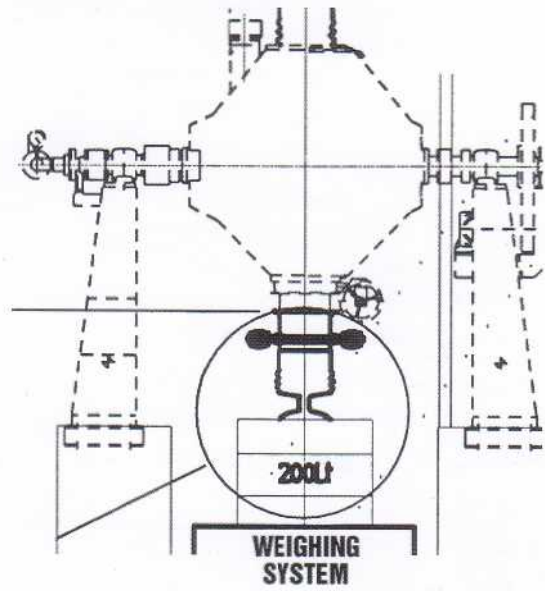
Non-volatile storage with 25 positions suitable to enter:

- Piece average unit weight.
- Most used containers'tare.
- Nominal target with tolerance +/-
- Tare that can be fixed and deducted from keyboard.

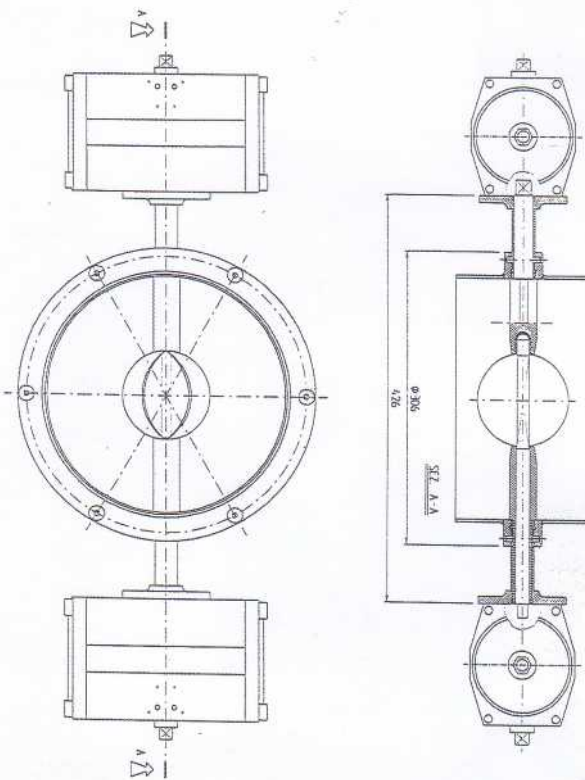




Application with static dryer + glove box for toxic products.



Application with rotating dryer.



Double V

